

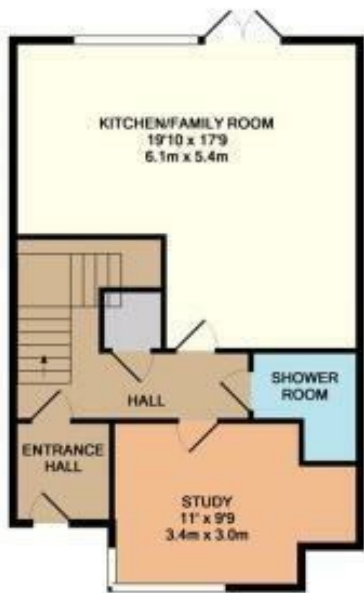
LUXE



29 Milestone Road, Newhall, Harlow, Essex, CM17 9NW

Offers In The Region Of £575,000

- Townhouse
- Open Plan Kitchen
- Double Garage
- Four Bedrooms
- Bespoke Window Shutters
- Great Location
- Three Bathrooms
- Sun Terrace



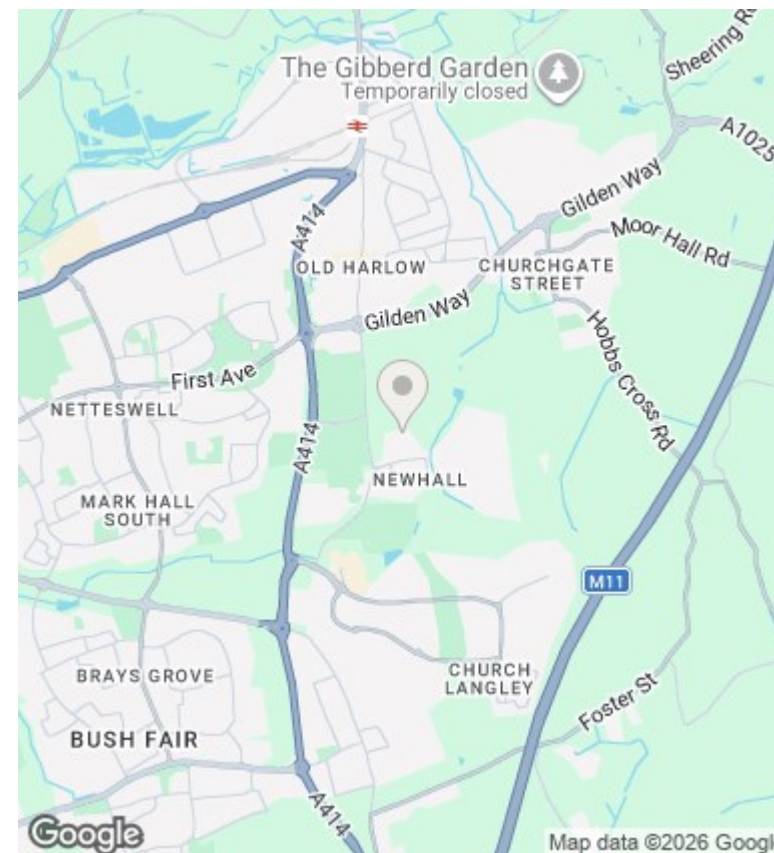
GROUND FLOOR
APPROX. FLOOR
AREA 54.8 SQ.M.
(1156 SQ.FT.)



1ST FLOOR
APPROX. FLOOR
AREA 54.8 SQ.M.
(1156 SQ.FT.)



2ND FLOOR
APPROX. FLOOR
AREA 28.2 SQ.M.
(604 SQ.FT.)



Directions

Milestone Road, Newhall, Harlow

Viewings

Viewings by arrangement only. Call 0203 551 6141 to make an appointment.

Council Tax Band

F

EPC Rating:

Energy Efficiency Rating		
	Current	Potential
Very energy efficient - lower running costs		
(92-plus) A		
(81-91) B		
(69-80) C		
(55-68) D		
(39-54) E		
(21-38) F		
(1-20) G		
Not energy efficient - higher running costs		
England & Wales	EU Directive 2002/91/EC	